

Switch Gear, Protection Relays, Circuit Breakers Product Lineup

Hirose Electric, as a world leader in the connectivity industry, has been developed a broad innovative electronic connectors over the years since its founding. Please visit our Web site for details of the listed products as well as other related product lines.

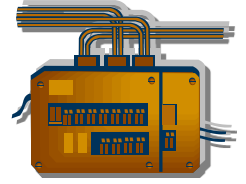
Switch Gear



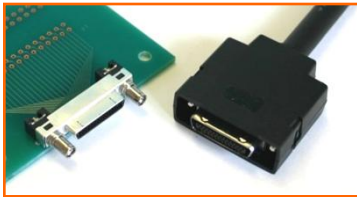
Protection Relays



Circuit Breakers



High Speed IF Connector DH Series



- ✓ 1mm pitch, High speed transmission supporting
- ✓ Excellent shielding for EMI prevention
- ✓ High speed cable is applicable (AWG 28, Jacket outer dia.: $\varnothing 0.9 \pm 0.04\text{mm max.}$)
- ✓ Available with Screw Lock / One Touch Lock, IDC / Soldering plug assembly, Straight & Right Angle receptacle in 17, 27, 37 and 51 contact positions

GT17H Series



- ✓ Meeting automotive spec.
- ✓ High speed transmission shielded connector with positive lock
- ✓ Excellent shielding for EMI prevention
- ✓ High speed transmission supporting up to 1 Gbps
- ✓ Available with Straight & Angle plug (Down Angle, Right Angle, Quarter Angle), Straight & Right Angle receptacle in 4 and 16 contact positions

Micro USB 3.0 Connector



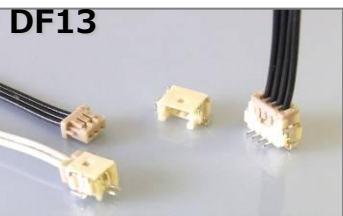
ZX

USB 3.0 Connector

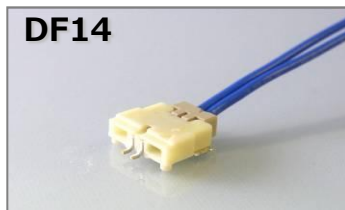


ZX360

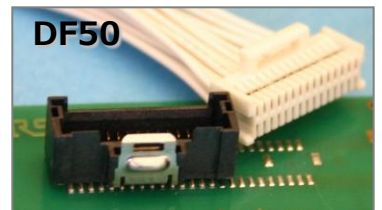
Wire to Board Connectors



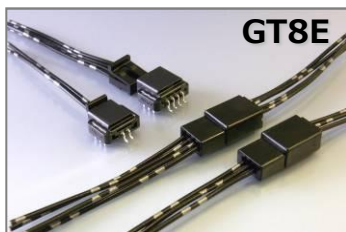
DF13



DF14



DF50



GT8E

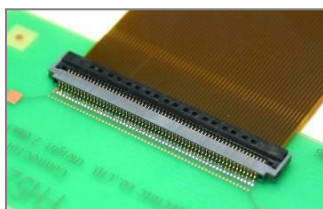


DF62

Series	Cable Size (AWG#)	Current Rating	Rated Voltage	Pitch	Mounting Style	Lock Style	No. of Pos.
DF13	26-32	1A	150V	1.25	DIP/SMT	Friction	2 to 15, 20, 30, 40
DF14	26-32	1A	150V	1.25	SMT	Friction	2 to 10, 15, 20, 25, 30
GT8E	20-28	3A	250V	2.0	DIP/SMT	Positive	2-8, 10, 12, 14, 16, 20, 24
DF50	28-30	1A	100V	1.0	SMT	Positive	20, 30, 40, 50
DF62	22-30	3 A	250V	2.2	In-Line	Positive	2 to 7, 13, 24

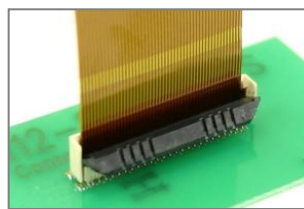
*Specifications herein are subject to change without notice. Contact Hirose for the latest specifications, drawings, and availabilities.

■ FPC/FFC Connectors



FH52 Series

Front flip, 0.5mm pitch, 2mm height, 5.7mm depth, Bottom contact, Side catch robust FPC/FFC connector
Available number of pos.: 6, 8, 10, 11, 12, 15, 18, 20, 24, 25, 28, 30, 32, 40, 42, 50, 60



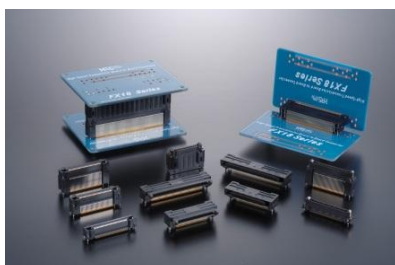
FH40 Series

Vertical mount, 0.5mm pitch, 2mm height, 3.55mm height, Side catch robust FPC/FFC connector
Available number of pos.: 50

More FPC/FFC connector line-up available on our website.

■ Board to Board Connectors

FX18 Series



- ✓ High-speed transmission (up to 10⁺ Gbps)
- ✓ Coplanar, Vertical, Mezzanine (10 to 45mm Distance)
- ✓ 0.8mm pitch
- ✓ 0.5A/ Signal contact
3A x 4 / Power contact
- ✓ 40, 60, 80, 100, 120 and 140pos.

FX20 Series



- ✓ Floating board to board connector
- ✓ Floating ranges from 0.6-0.8mm
- ✓ Vertical & Mezzanine (15-30mm Distance)
- ✓ Dual-beam reliable contact
- ✓ 0.5mm pitch
- ✓ 0.5A
- ✓ 20, 40, 60, 80, 100, 120 and 140pos.

FX2 Series



- ✓ Many varieties
- ✓ Coplanar, Vertical, Mezzanine (12 to 16mm Distance)
- ✓ DIP & SMT
- ✓ 1.27mm pitch
- ✓ 0.5A
- ✓ 20, 32, 40, 52, 60, 68, 80, 100 and 120

FX6 Series



- ✓ Mezzanine connector
- ✓ 0.8mm pitch
- ✓ 0.5A
- ✓ 5-9mm height
- ✓ 30, 40, 50, 60, 80 and 100pos.

FX8/8C Series



- ✓ Mezzanine connector
- ✓ 0.6mm pitch
- ✓ 0.4A
- ✓ 3 & 4mm height available in;
40, 60, 80, 90, 100, 120 and 140pos.
- ✓ 5-16mm height available in;
Single use: 40, 60, 80, 100, 120, 140
Twin use: 120, 160, 200, 240, 280

For more information about Hirose products: <http://www.hirose.com>

[Japan]	TEL: +81-45-620-3491	[Malaysia]	(Penang)	TEL: +604-619-2564
[China]	(Shanghai) TEL: +86-21-6391-3355	[Thailand]	(Bangkok)	TEL: +66-2-686-1255
	(Beijing) TEL: +86-10-5165-9332	[USA]	(Chicago) (USA HQ)	TEL: +1-630-282-6700
	(Shenzhen) TEL: +86-755-8207-0851		(San Jose)	TEL: +1-408-253-9640
[Hong Kong]	(Kowloon) TEL: +852-2803-5338		(Detroit) (Automotive)	TEL: +1-734-542-9963
[Taiwan]	(Taipei) TEL: +886-2-2555-7377	[The Netherlands]	(Amsterdam)	TEL: +31-20-6557460
[Korea]	(Siheung) TEL: +82-31-496-7000 or 7124	[Germany]	(Stuttgart)	TEL: +49-711-4560021
[Singapore]	(Anson Road) TEL: +65-6324-6113		(Nuremberg)	TEL: +49-911-32688963
[India]	(Delhi) TEL: +91-12-660-8018		(Hanover)	TEL: +49-511-97826130
	(Bangalore) TEL: +91-80-4120-1907	[France]	(Paris)	TEL: +33-1-85764886
		[UK]	(Milton Keynes)	TEL: +44-1908-202050

*Specifications herein are subject to change without notice. Contact Hirose for the latest specifications, drawings, and availabilities.